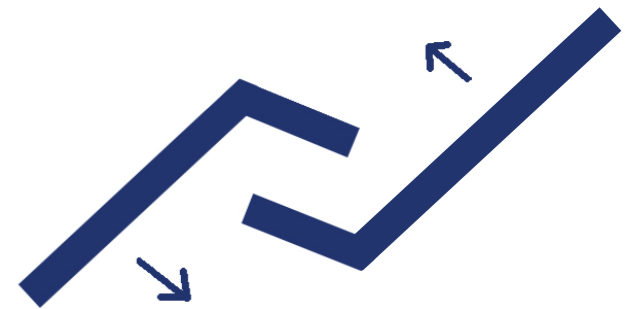
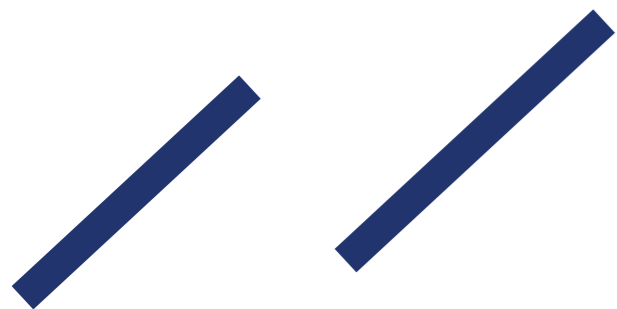
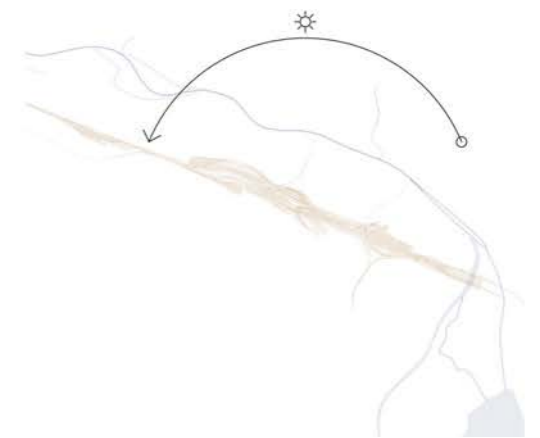
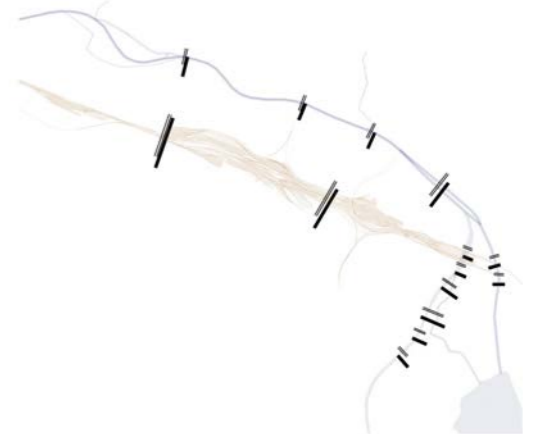
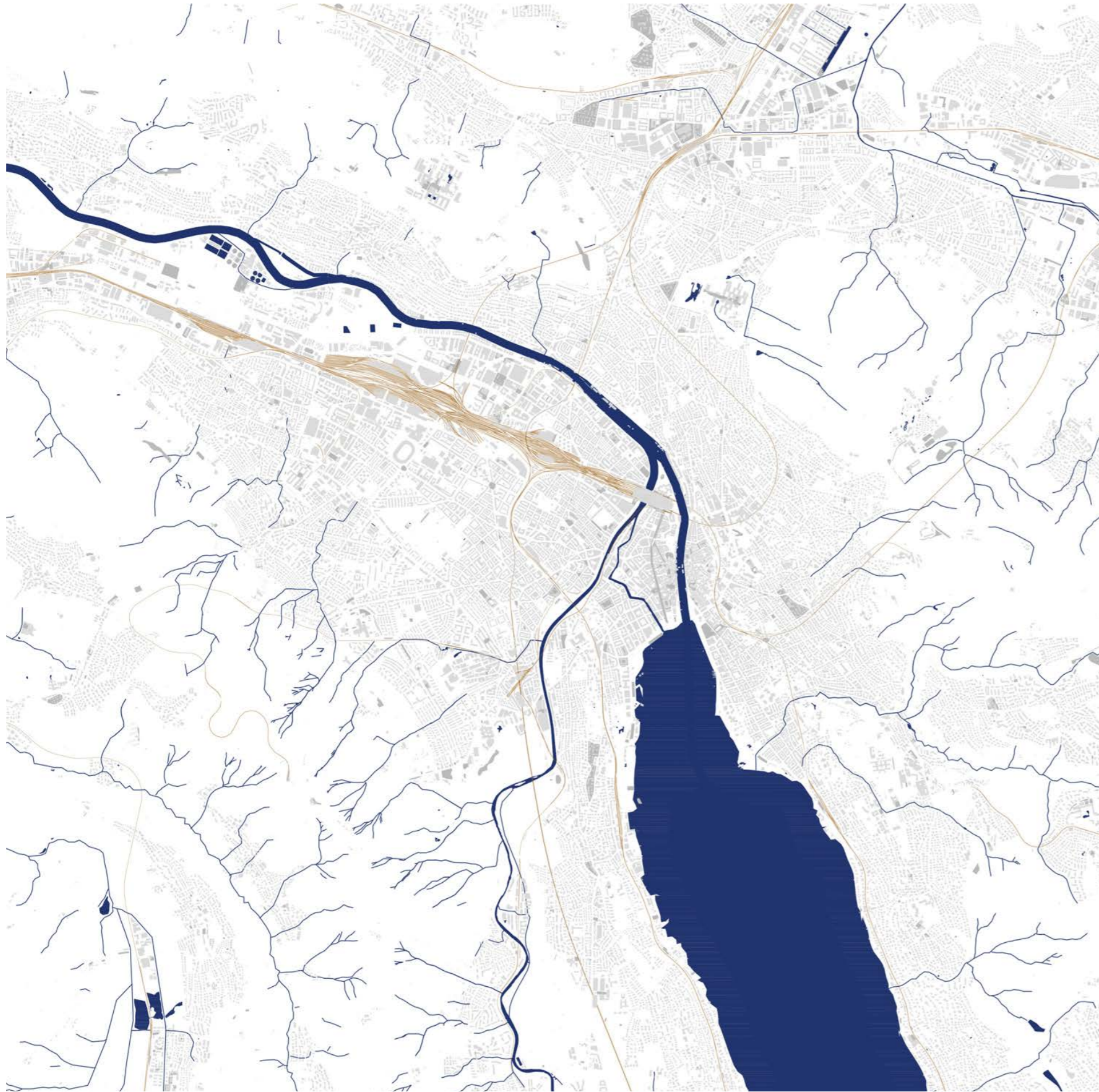


# ÉCHANGER AVEC LES ÉCHANGEURS

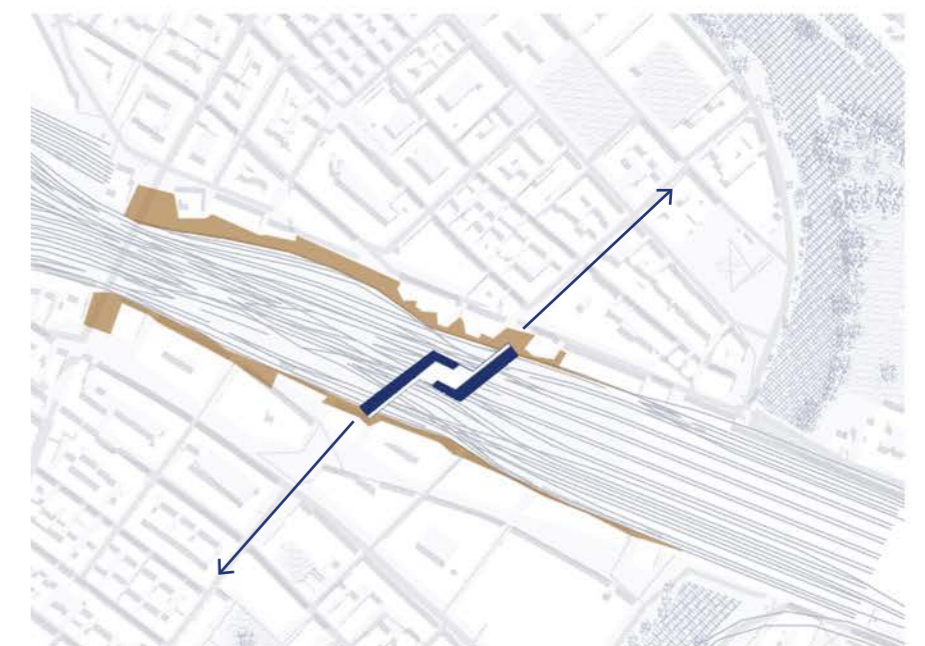
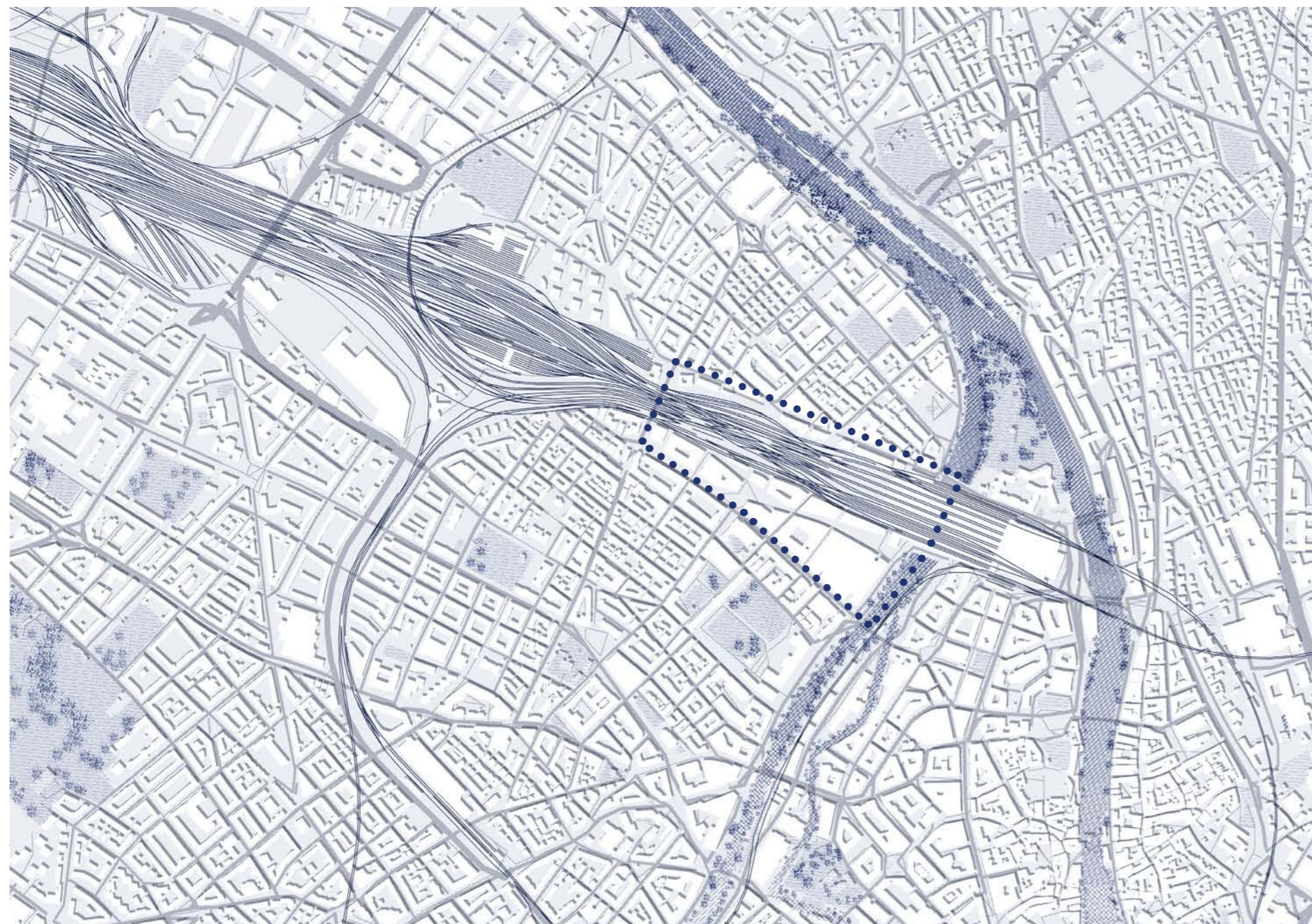
## ZURICH SUR LES RIVES





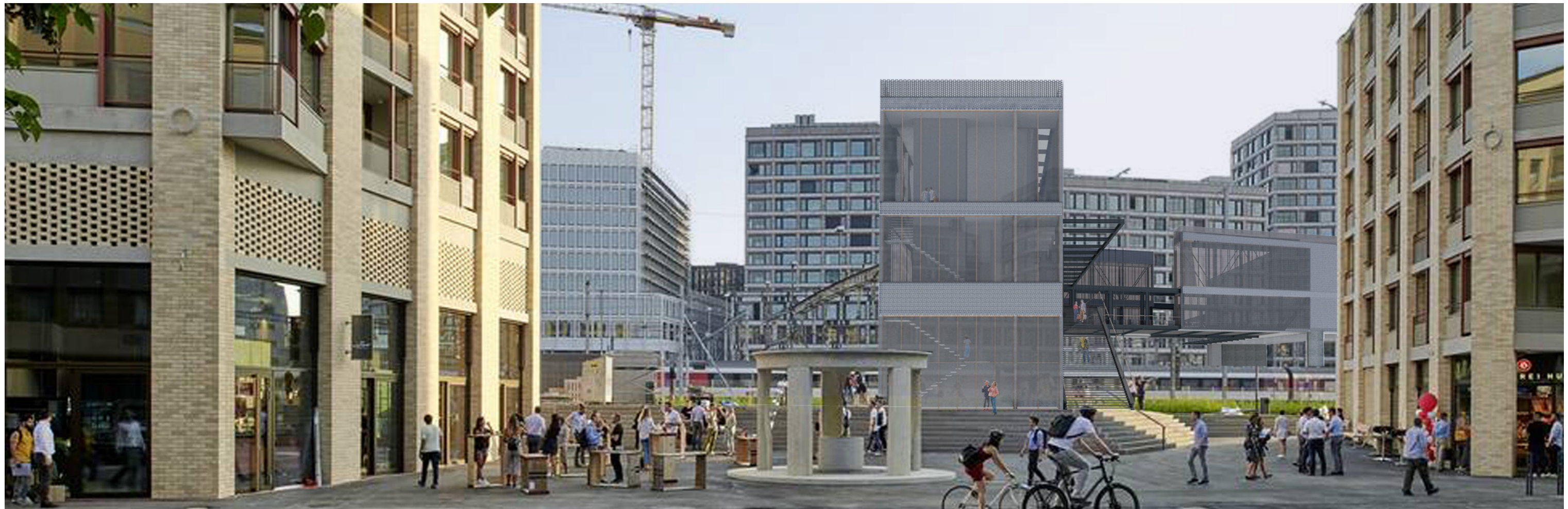
Carte 1/10000e

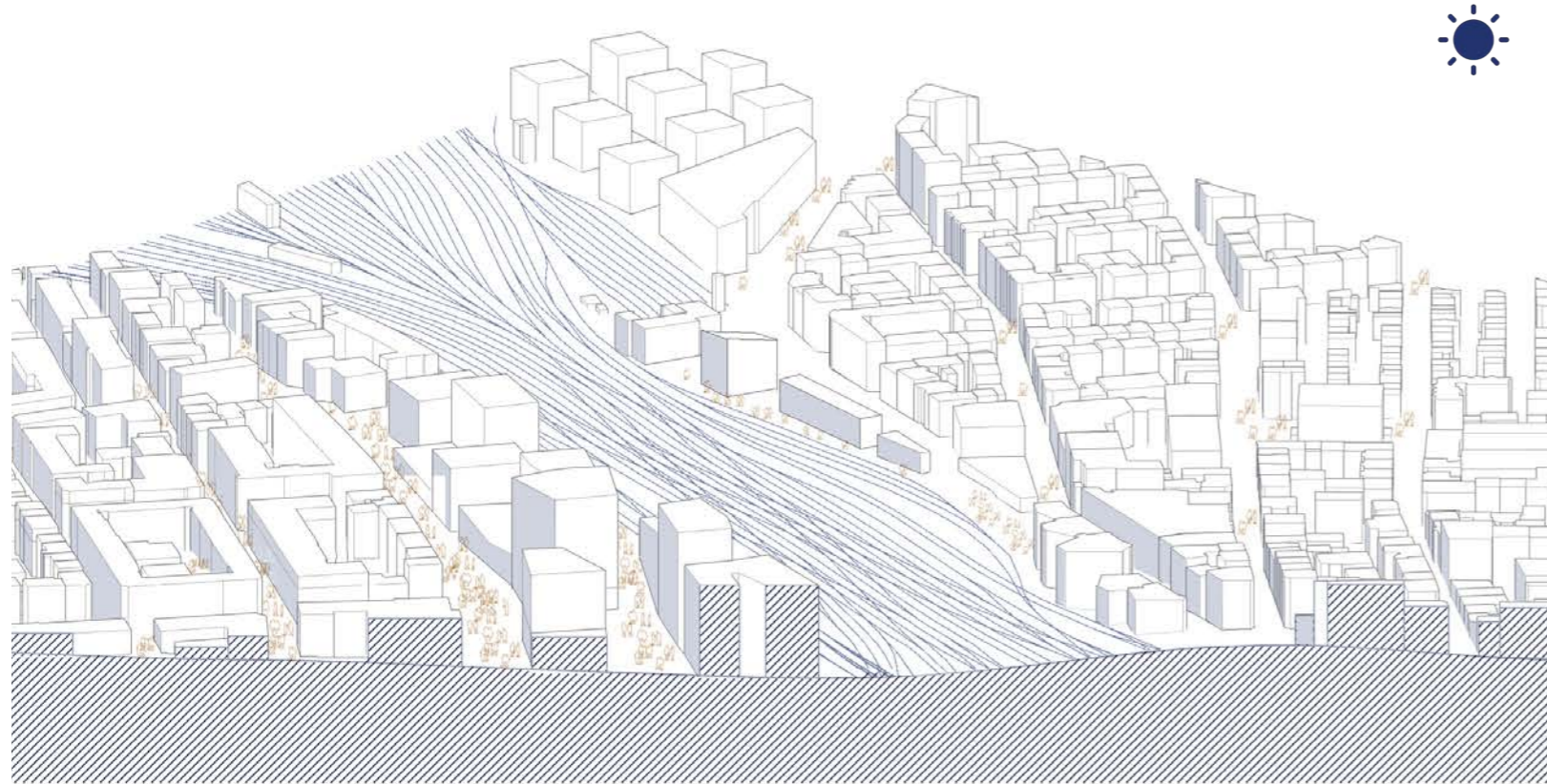
Schémas 1/10000 et 1/5000e



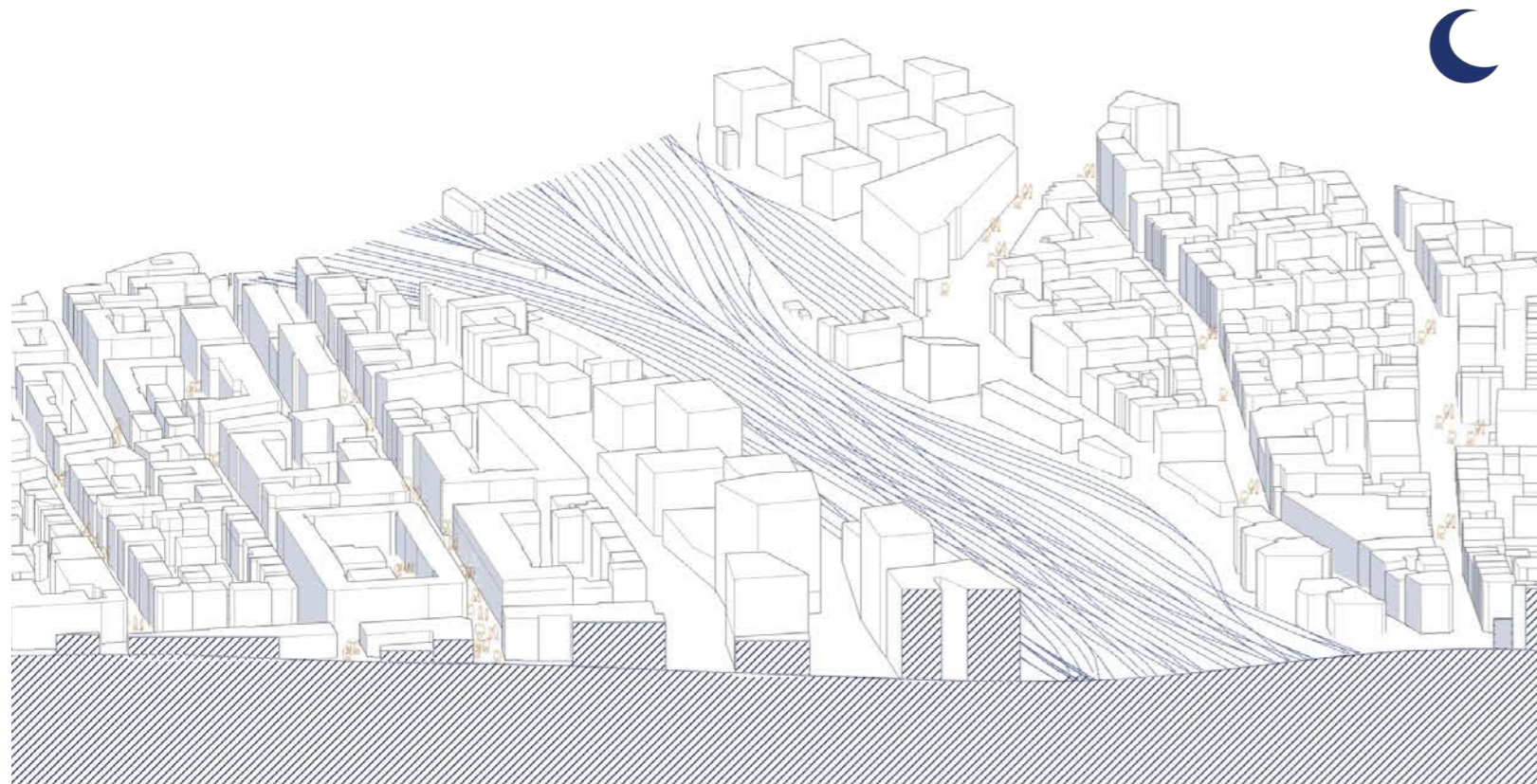
Carte 1/5000e - Quartier de l'Europaallee

Schémas 1/5000e - Rives et franchissement en 2 temps





Axonométrie - Quartier de l'Europaallee de jour



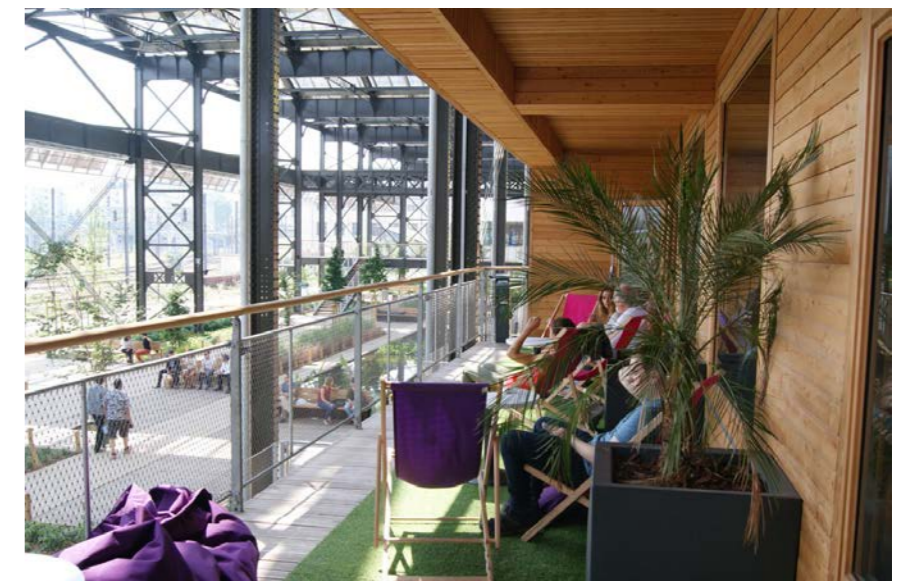
Axonométrie - Quartier de l'Europaallee de nuit



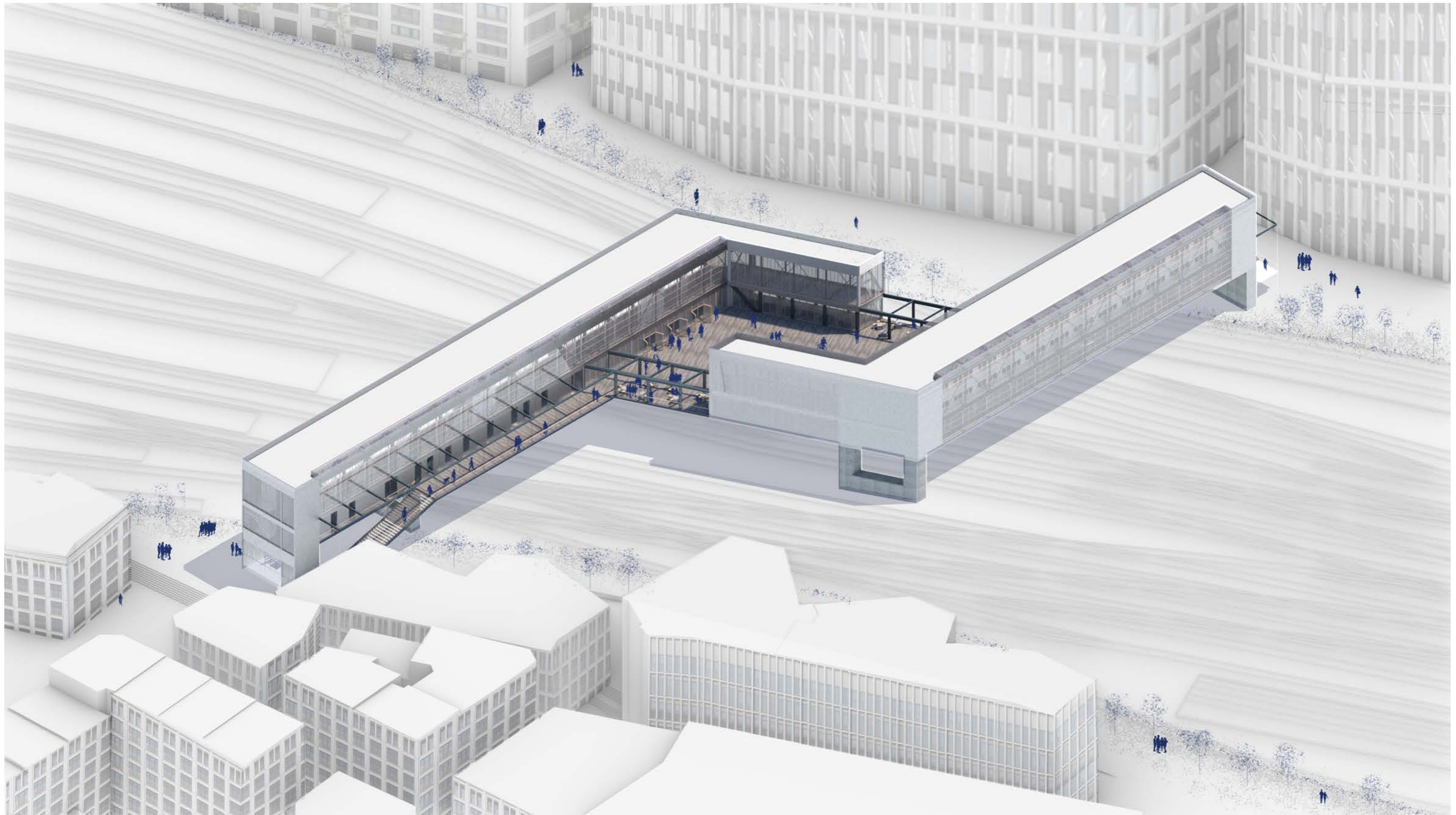
Rolex Learning Center, Lausanne

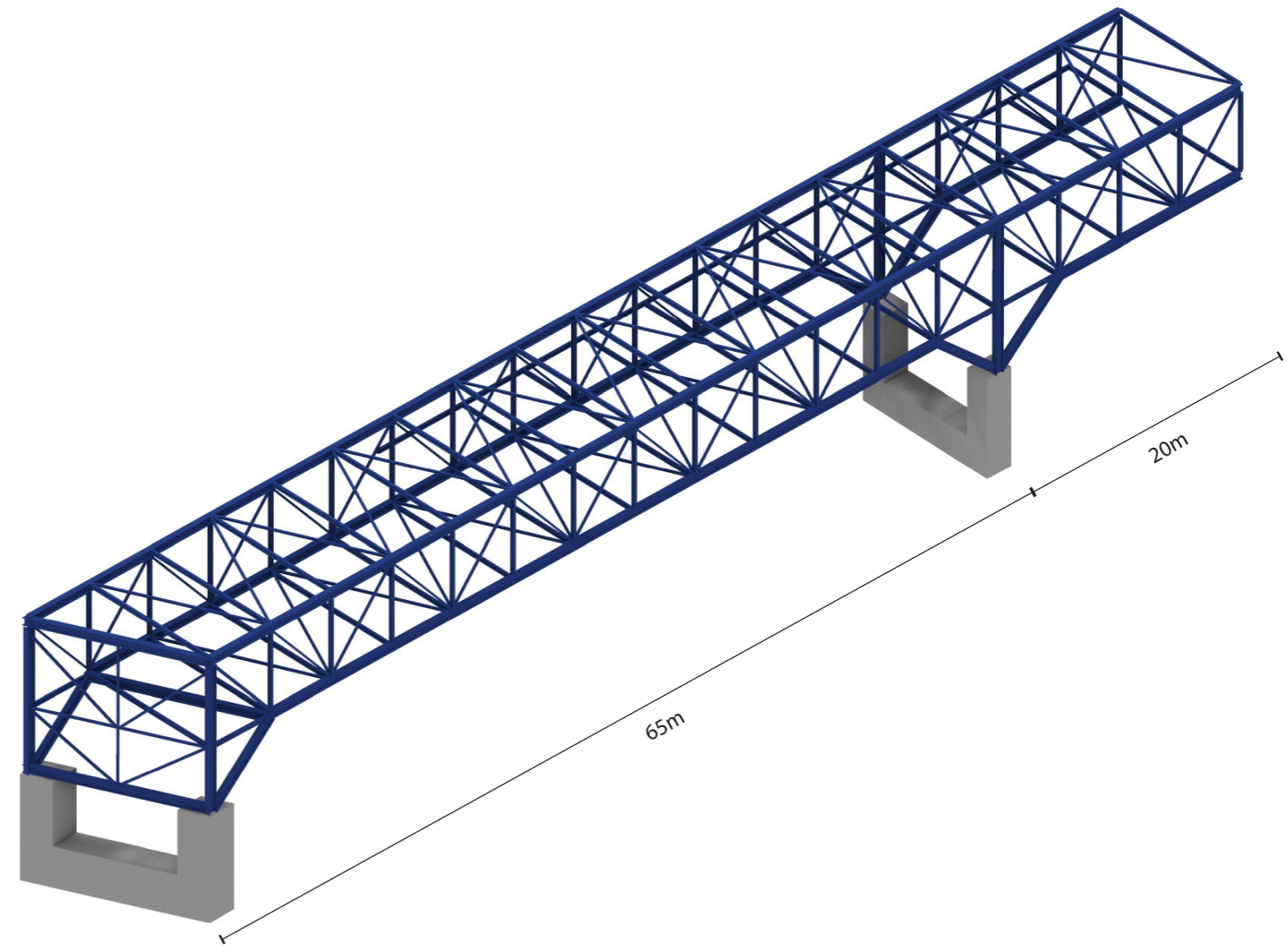
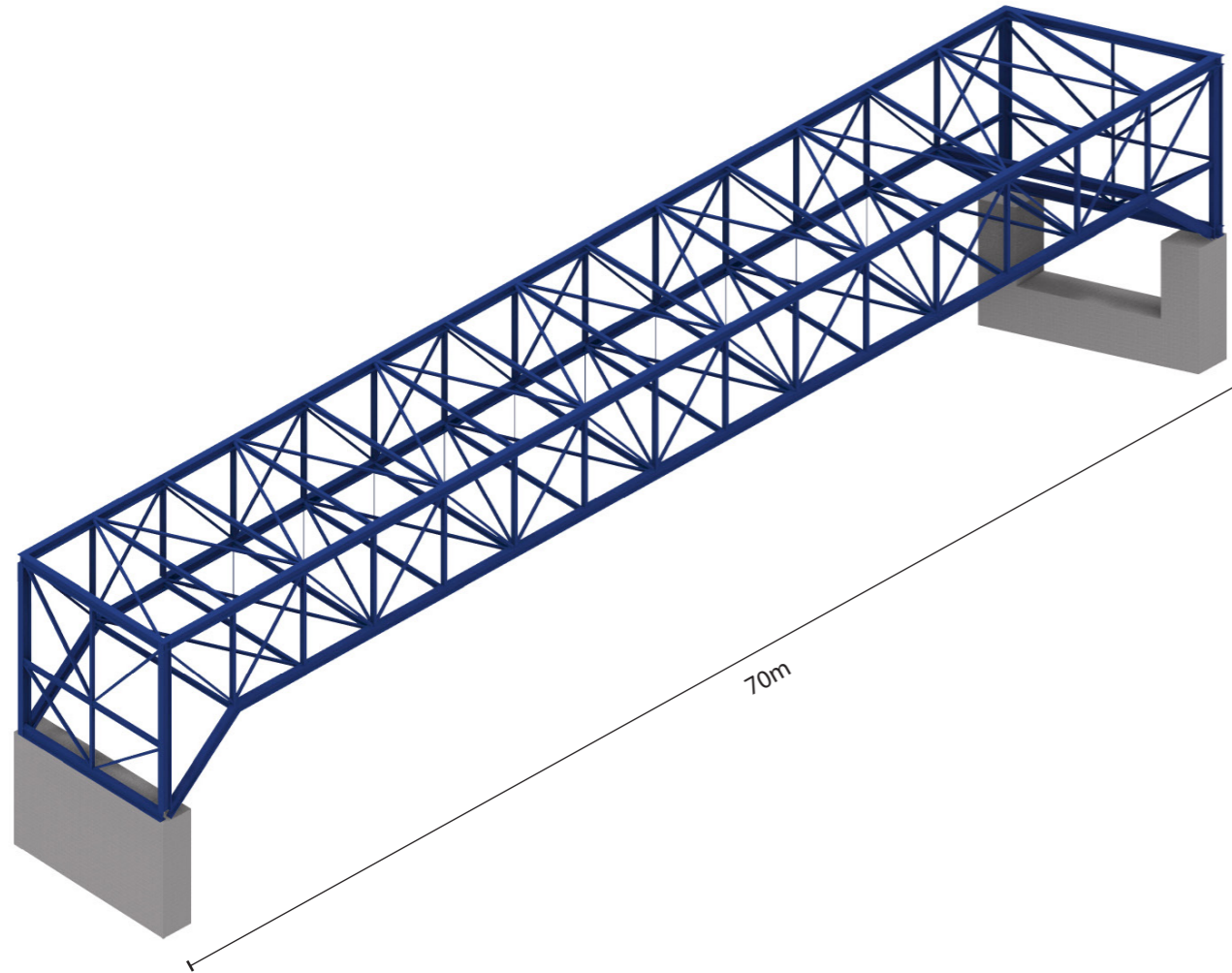


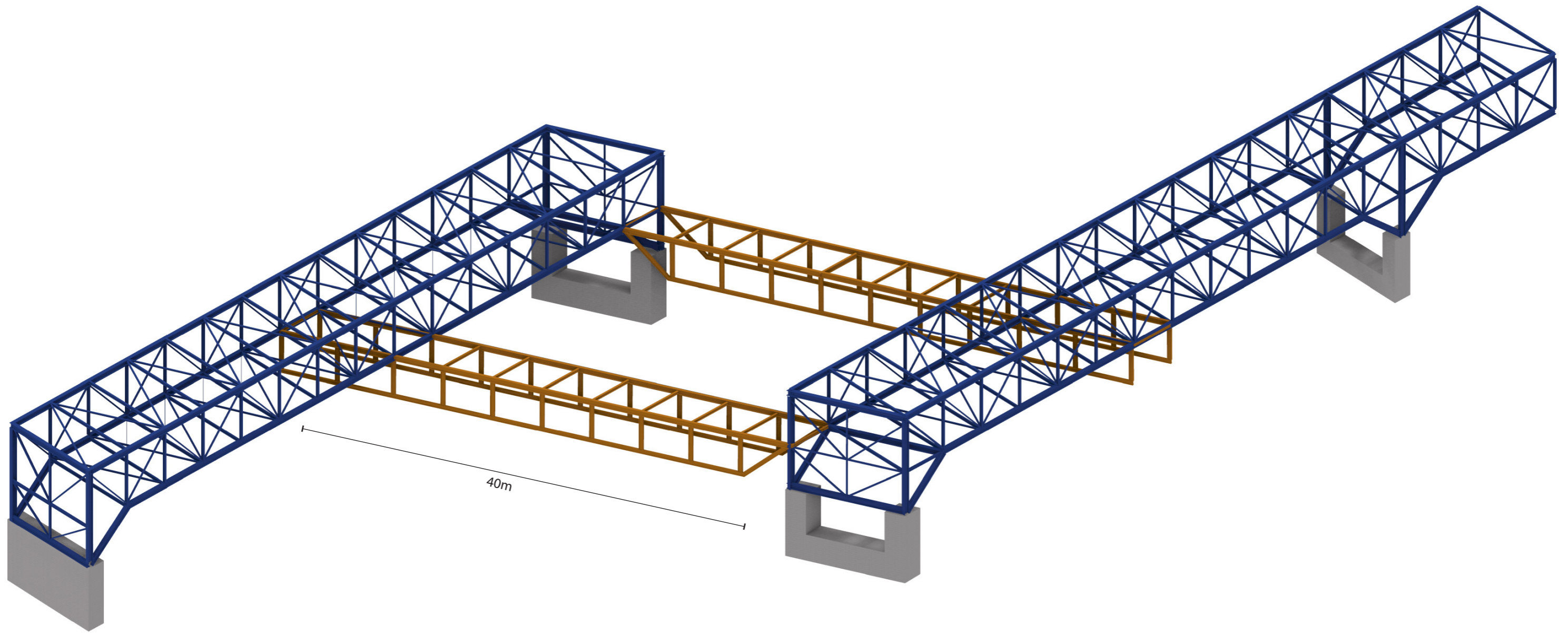
Frau Gerolds Garten, Zurich



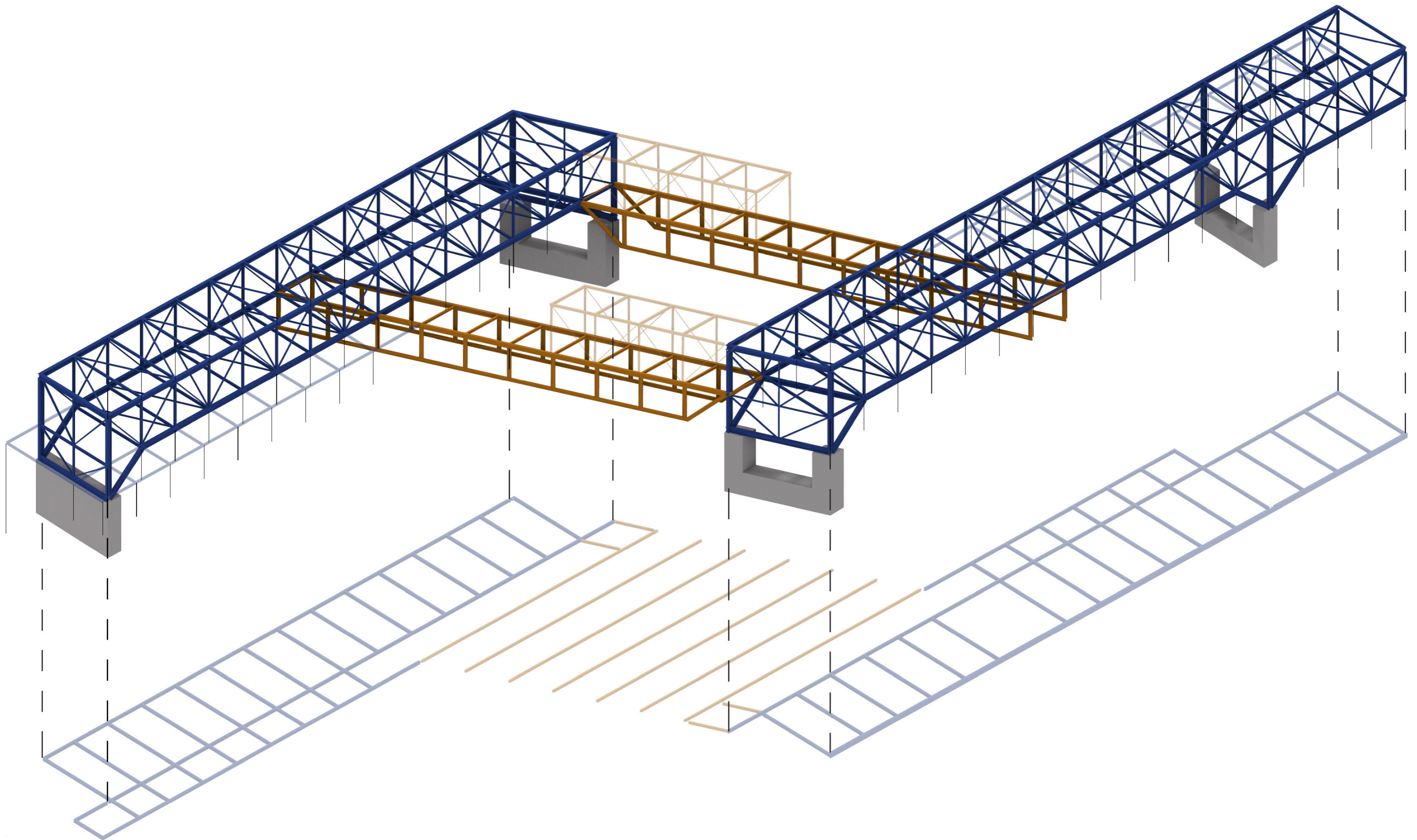
Auberge de Jeunesse Yves Rober, Paris

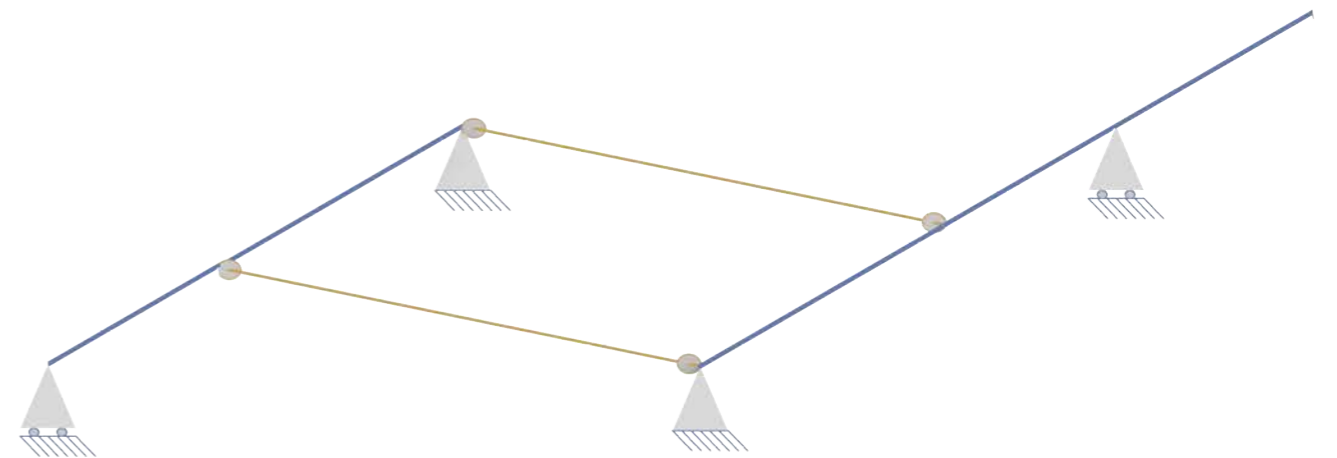
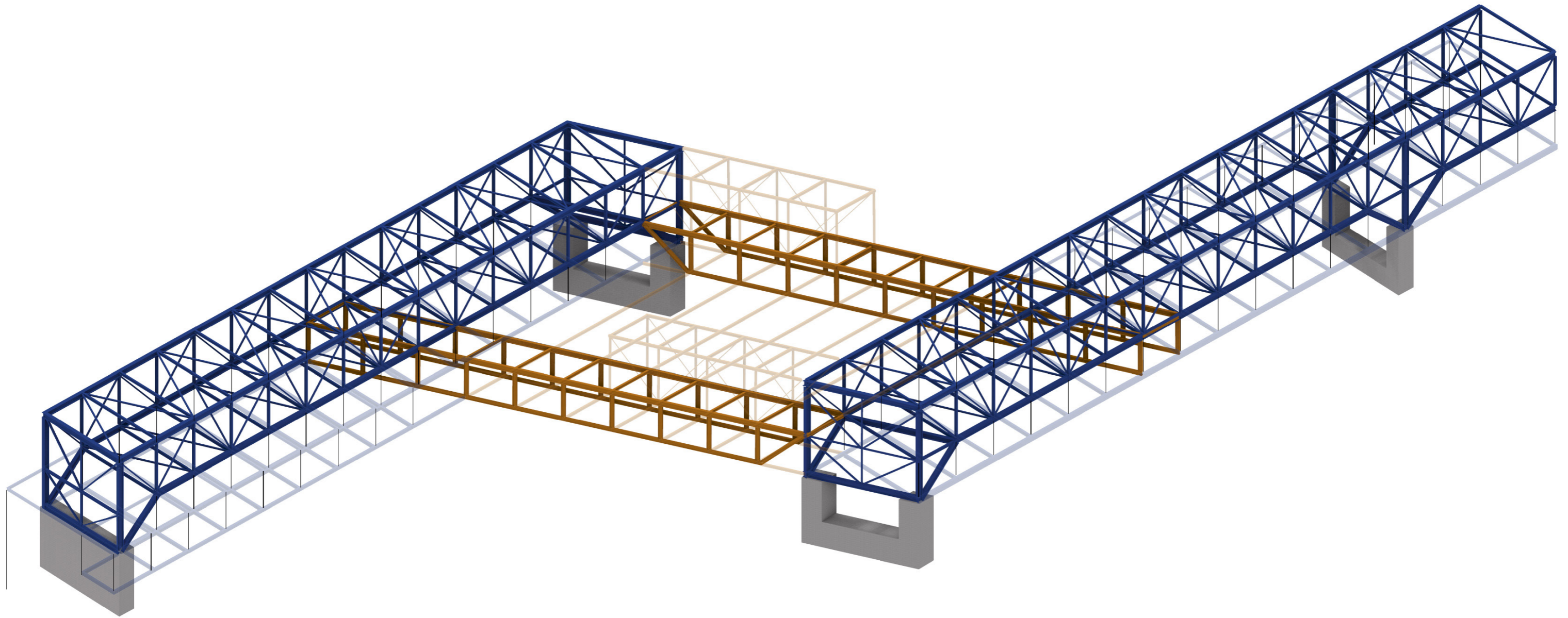


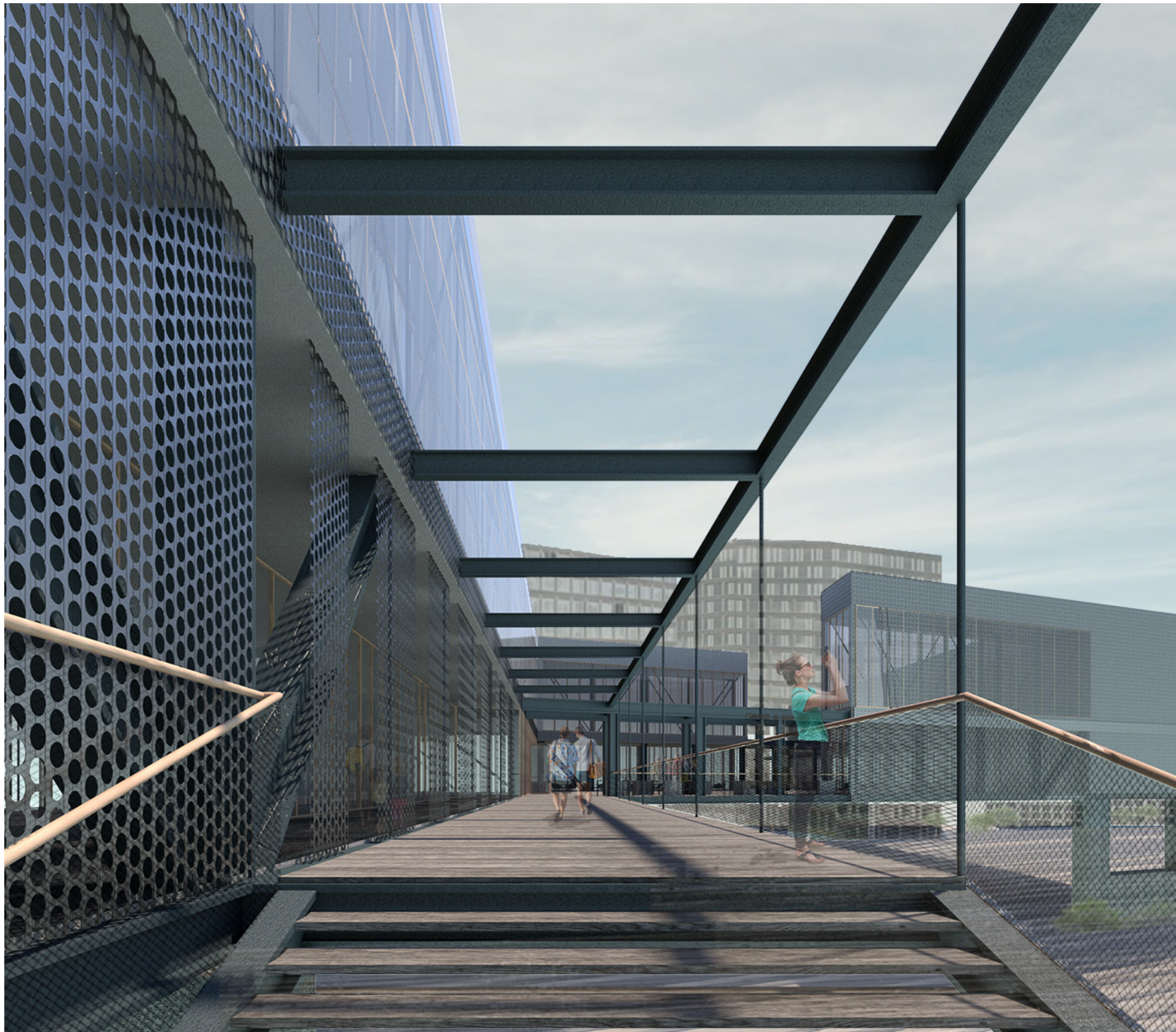


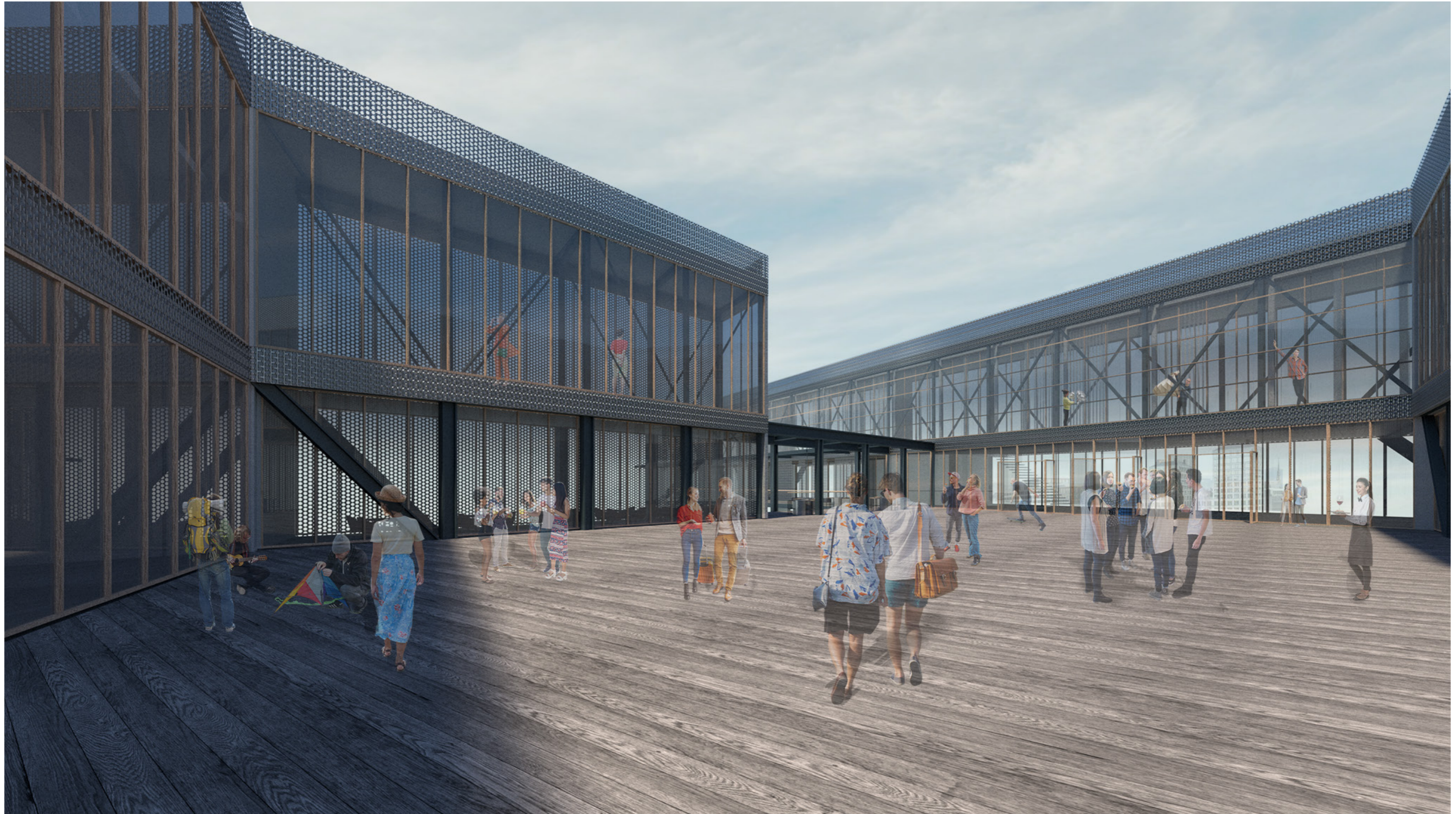


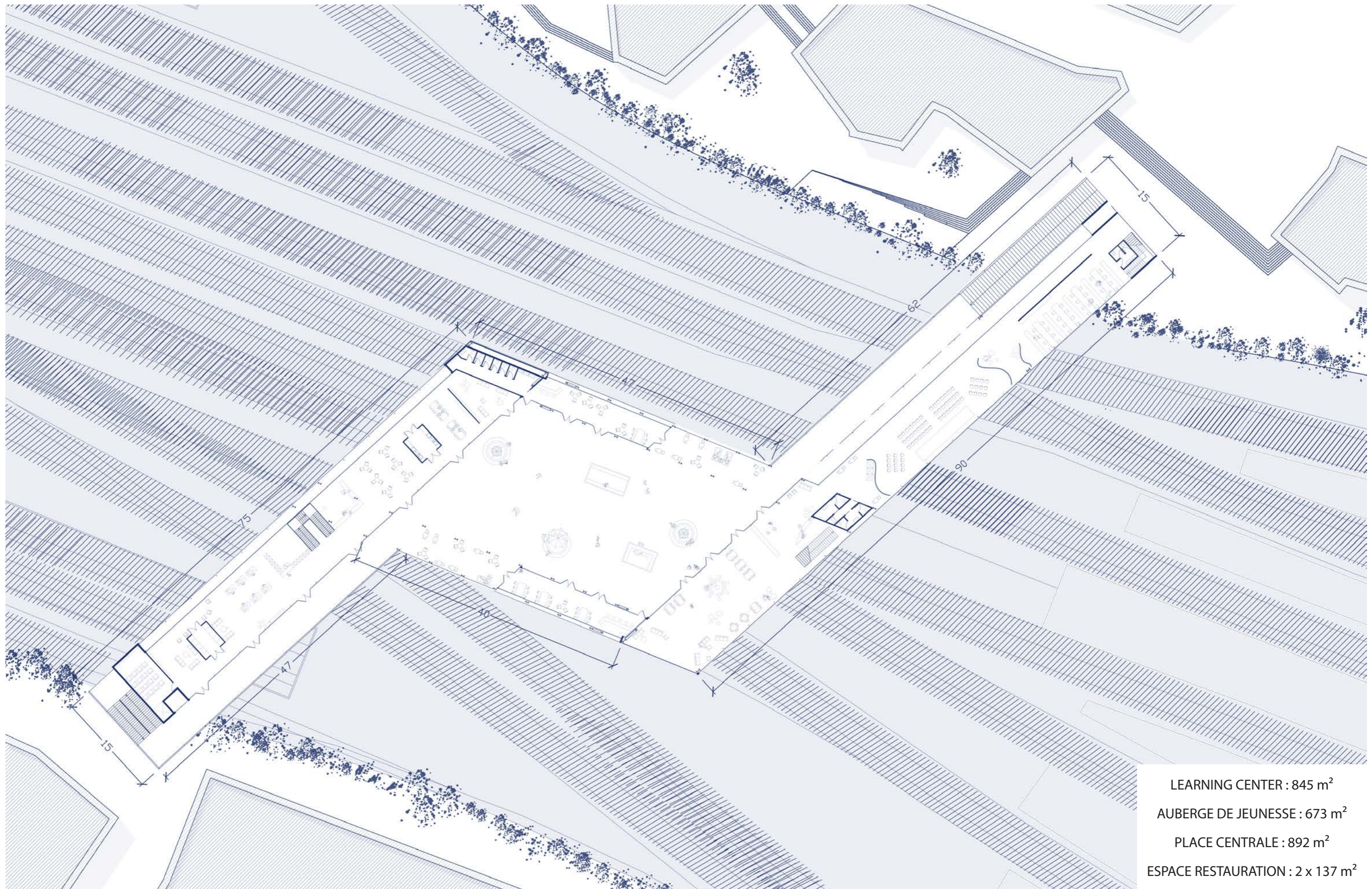


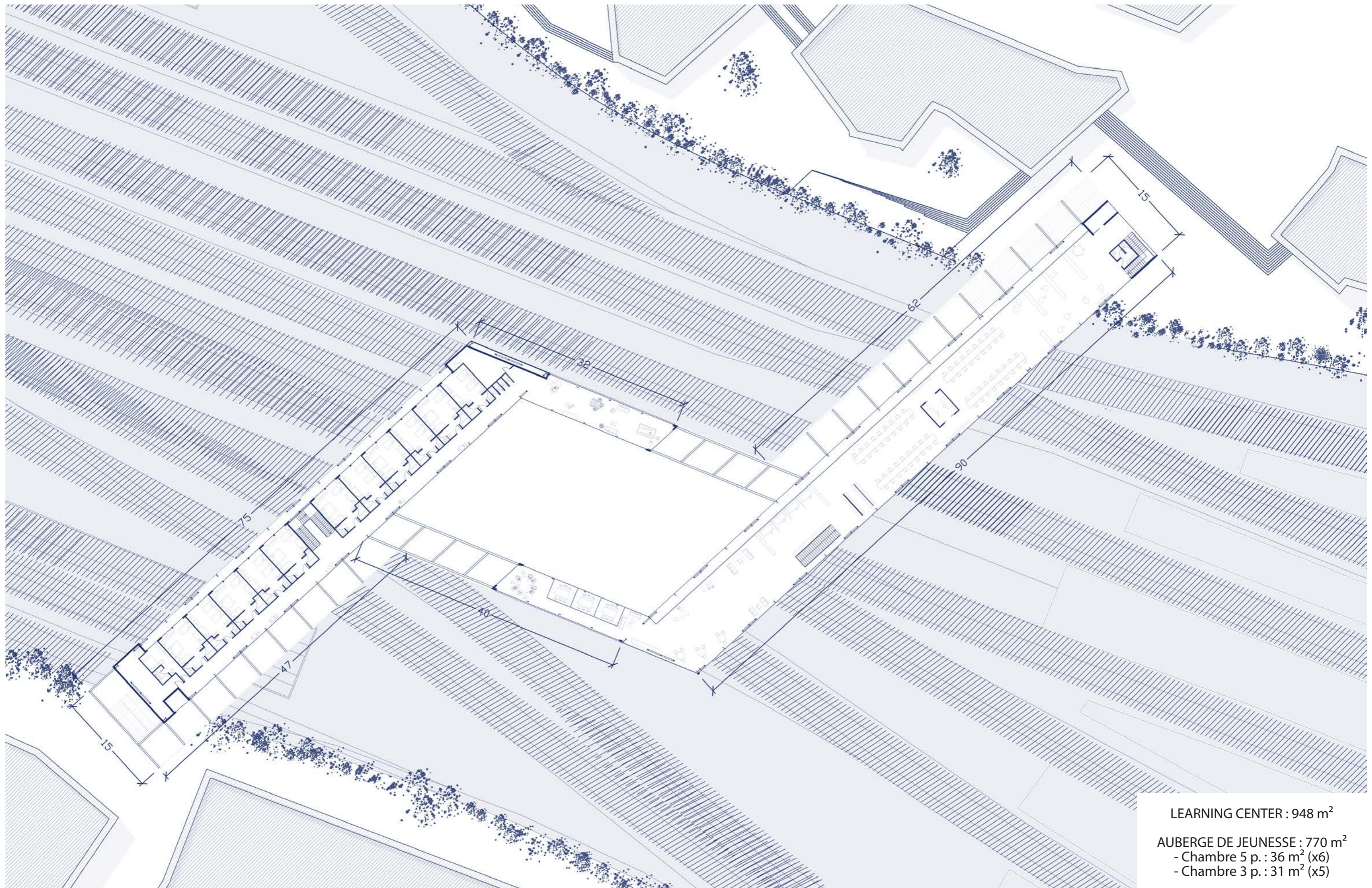












LEARNING CENTER : 948 m<sup>2</sup>

AUBERGE DE JEUNESSE : 770 m<sup>2</sup>

- Chambre 5 p. : 36 m<sup>2</sup> (x6)

- Chambre 3 p. : 31 m<sup>2</sup> (x5)



